



Industry User Manual
Project: Strengthening of the Education Management System
(EMIS) in The Gambia
Prepared by: InSIST Global

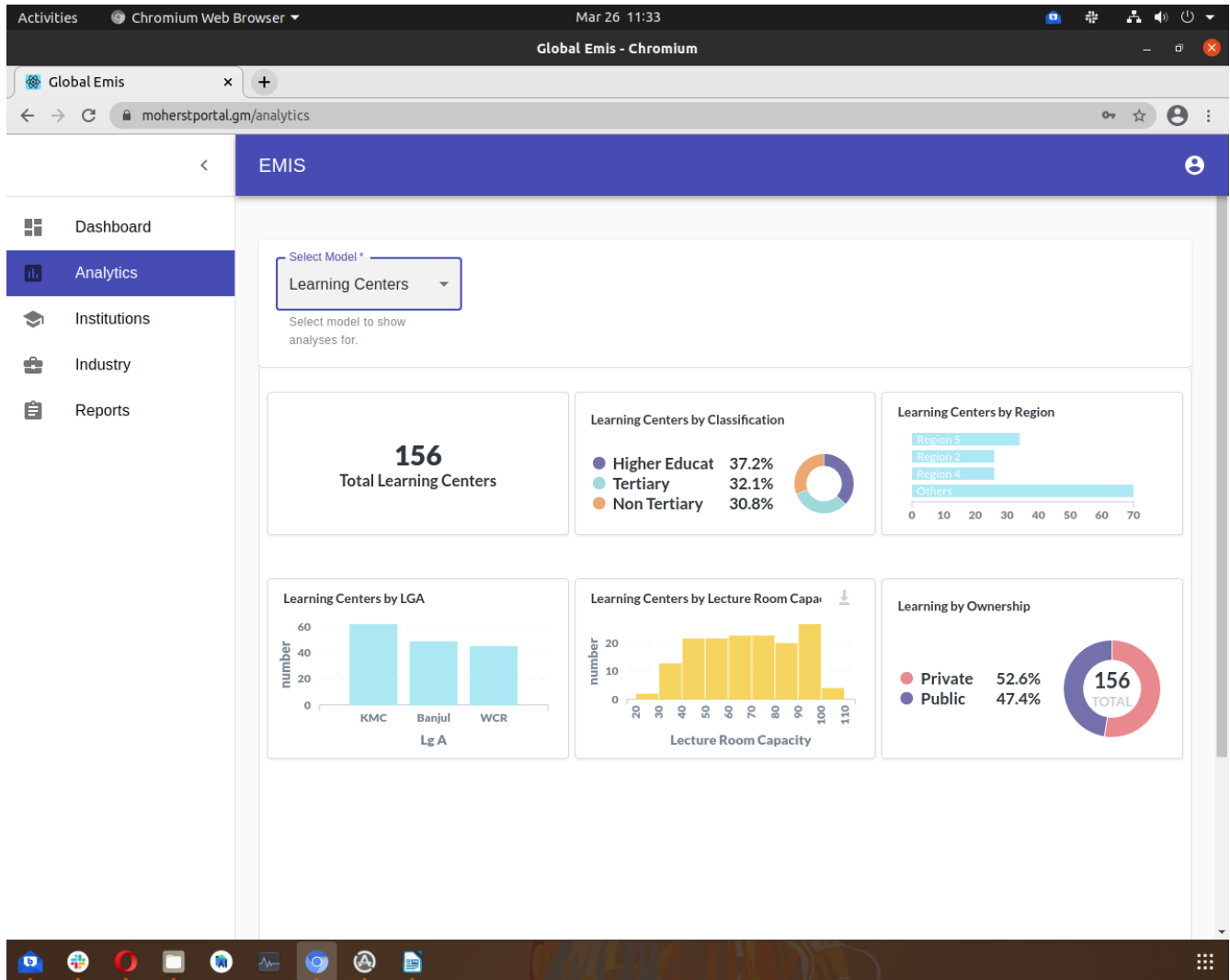
Contents

Table of Contents

Registration	3
Sign In	3
General Analysis	4
Institution Data Review	5
Adding Vacancies	5

General Analysis

1. Log into the system
2. Click on the **Dashboard** or **Analytics** Menu



Institution Data Review

1. Log into the system
2. Click on the **Institutions Module** on the side bar
3. Click on an institution to view details

The screenshot shows the Global Emis web application interface. The browser address bar indicates the URL is moherstportal.gm/institutions. The left sidebar contains navigation options: Dashboard, Analytics, Institutions (highlighted), Industry, and Reports. The main content area is titled 'EMIS' and features three tabs: HIGHER EDUCATION (selected), TERTIARY, and NON TERTIARY. Below the tabs is a table titled 'Higher Education Institutions' with a search bar and icons for search, close, download, and refresh. The table has a header row with columns: Name, Ownership, Region, and LGA. Below the header is a row with filter icons for each column. The table contains six rows of data:

Name	Ownership	Region	LGA
Abshire-Kub	Private	Region 6	KMC
Al Bayn	Private	Region 1	KMC
Beier-Jaskolski	Public	Region 2	KMC
Bergnaum Inc	Private	Region 2	WCR
Bergstrom, Robel and Douglas	Public	Region 1	KMC

At the bottom of the table, there is a pagination control showing '5 rows' and '1-5 of 58'.

Industry Data Review

1. Log into the system
2. Click on the **Industry Module** on the side bar
3. Click on an industry to view details

Activities Chromium Web Browser Mar 26 11:44 Global Emis - Chromium

Global Emis moherstportal.gm/industry

EMIS

Dashboard
Analytics
Institutions
Industry
Reports

External Stakeholders

Search

Drag headers here to group by

Name	Address	Area of Interest	Region	Ownership	Status
MoHERST	Bijilo	civil_service		public	
MoBSE	Banjul	civil_service		public	
NAQQA	Bakau	Education	Banjul	public	
InSIST Global	Kairaba Avenue	Computer Science	KMC	private	
UNESCO	Banjul	Education	Banjul	private	

5 rows |< < 1-5 of 6 > >|

Reports Review

1. Log into the system
2. Click on the **Reports Module** on the side bar
3. Click on a report and edit the loaded filter fields to view details

- Dashboard
- Analytics
- Institutions
- Industry
- Reports**

Reports
Admission Report by Learning Center
Admission Report by Programme
Admission Report by Learning Center And Programme
Enrollment Report by Learning Center
Enrollment Report by Programme
Enrollment Report by Learning Center And Programme
Graduation Report by Learning Center
Graduation Report by Programme
Graduation Report by Learning Center And Programme
Scholarship Report by Learning Center
Scholarship Report by Learning Center And Scholarship Name
All Scholarships Report

